

Options appraisal assists future development strategy

Carterwood was instructed to carry out a national opportunities review and options appraisal to assist in the development strategy for a not-for-profit elderly care operator with a beneficiary population.

Background:

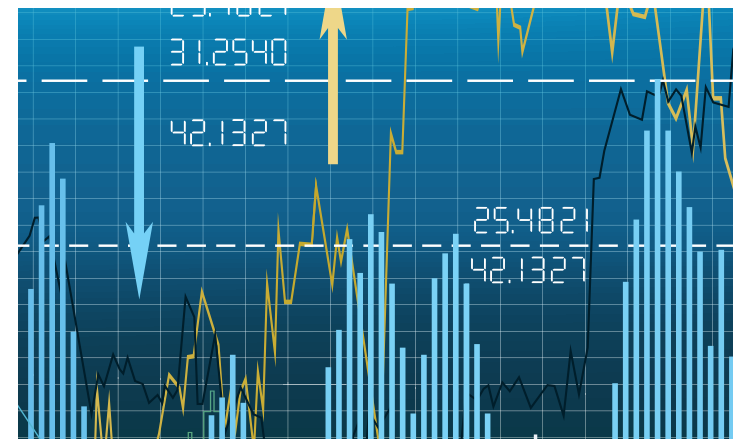
- Not-for-profit provider seeking to develop six new elderly care homes.
- Sought advice on best places to develop.
- Needed opinion on most appropriate categories of care.
- Beneficiary population needs of prime importance.

What we did:

- Identified target areas that were appropriate to beneficiary population needs.
- Outlined alternative options within selected target areas including acquisition of existing businesses with suitable quality profiles.
- Considered different operational models ranging from fully managed to fully outsourced facilities.
- Carried out opportunities review to identify specific site opportunities.
- Reviewed existing care provision within key target locations.
- Undertook analysis of dementia provision, comprising an assessment of total specialist dementia capacity.
- Assessed planned dementia provision within the key target areas.

Added value:

- Our input helped shape the future development strategy for the organisation.
- Submitted report changed organisation's view as to where they wanted to target future development.
- Detailed analysis identified a number of development sites and trading care homes that met the client's acquisition requirements.
- Brief developed after appointment with regular consultation with client to ensure final report met clients exact needs.
- Facilitated introductions with operators and developers that met with client requirements.
- Full presentation to board enabled informed debate on the key findings and recommendations.



For more information about Carterwood or to find out how we can help you, call Amanda or Ben on: **08458 690777**

info@carterwood.co.uk
www.carterwood.co.uk

Aztec Centre, Aztec West,
Bristol, BS32 4TD

Regulated by RICS